

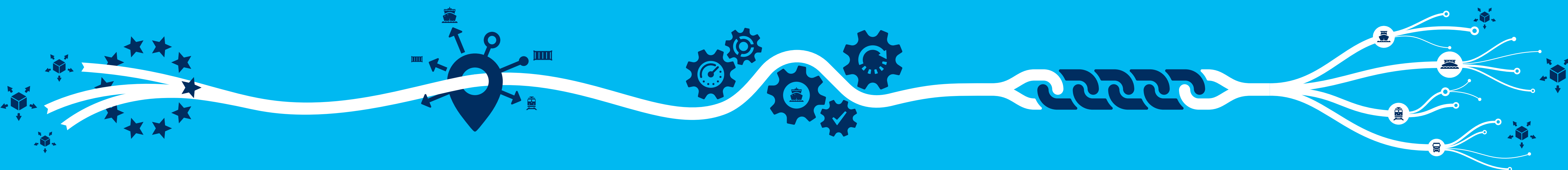
THE GATEWAY TO AND FROM EUROPE

RELIABLE & FLEXIBLE

FAST & EFFICIENT

SAFE & SUSTAINABLE






SMOOTH END-TO-END FLOW



-  LOCATED BETWEEN EUROPE'S THREE LARGEST ECONOMIES; GERMANY, FRANCE, UK
-  BEST CONNECTED GLOBAL & EUROPEAN NETWORK (TRANSHIPMENT HUB)
-  NAVIGATE FIND, SEARCH AND COMPARE CONNECTIONS
-  SHORTER TRANSIT TIME THANKS TO FIRST & LAST PORT OF CALL
-  STABLE & DIVERSE CARRIER BASE

-  DISTRIBUTION & HANDLING CAPACITY WITH EXTENSIVE WAREHOUSING AND CROSSDOCKING FACILITIES
-  NO RESTRICTIONS: 24/7 ACCESS, NO LOCK OR TIDAL WINDOWS, MAX. DRAFT OF 19,65M, 2 HRS FROM PILOT TO BERTH
-  PORT CALL OPTIMIZATION APPLICATION PORTXCHANGE
-  EXTENSIVE FACILITIES FOR PERISHABLES AND HAZARDOUS CARGO
-  DEDICATED DEEP-SEA & SHORTSEA CLUSTER

-  SMART (DIGITAL) INFRASTRUCTURE: PORT COMMUNITY SYSTEM
-  FAST CARGO AVAILABILITY
-  BUSINESS ORIENTED CUSTOMS AUTHORITY WITH ON-SITE SCANNING FACILITIES
-  EFFICIENT EXCHANGE OF CONTAINERS BETWEEN TERMINALS
-  CASH-FLOW ADVANTAGES THANKS TO VAT DEFERMENT

-  SAFETY TRACK RECORD BASED ON CLEAR PROCEDURES
-  SUSTAINABLE & STATE OF THE ART TERMINALS
-  HIGHLY-EDUCATED AND FLEXIBLE WORKFORCE
-  AVAILABILITY OF LNG & LOW-SULPHUR FUELS FOR BUNKERING
-  FRONTRUNNER IN ENERGY TRANSITION

-  THE WORLD'S BEST INFRASTRUCTURE (ACCORDING TO THE WORLD ECONOMIC FORUM)
-  STRONG MULTIMODAL HUB OFFERING MAXIMUM OPTIONALITY
-  EXCELLENT SOLUTIONS FOR SUPPLY-CHAIN VISIBILITY
-  EXTENSIVE BARGE CONNECTIONS BY RHINE AND MAAS
-  EXCELLENT RAIL CONNECTIONS & ROAD NETWORK

WHY ROTTERDAM?

ROTTERDAM OFFERS THE MOST EXTENSIVE NETWORK

An extensive network of shortsea, barge, rail and road connections offers you unparalleled optionality and flexibility and puts 500 million customers and all major European industrial centres within 24 hours reach.

ROTTERDAM IS FASTER AND MORE EFFICIENT

Excellent services and service providers and a dedicated container cluster offer the fastest transit times, services and connections between the world and Europe: lowering your total transport times and costs.

ROTTERDAM IS RELIABLE

The highest standards of safety and services, as well as a stable government, cooperative customs services, and the world's best infrastructure, ensure your cargo is handled and transported within planning and budget.

ROTTERDAM IS OPTIMIZING THE WHOLE SUPPLY CHAIN

By reaching out to all parties involved, sharing our knowledge and driving innovation we build a supply chain that is smoother, more reliable and has less waste.

GETTING READY FOR THE FUTURE

Rotterdam's track record is second to none. We take pride in our heritage, but we look at the future as well. Two inevitable changes will radically transform the entire container supply chain and with it our business: digitization and sustainability.

Rotterdam intends to embrace both and lead the change and ensure the port and all its users benefit from a supply chain that is smarter, even more reliable and increasingly sustainable as well.

THE WORLD'S SMARTEST PORT

The digital transformation will impact the entire end-to-end chain. Greater transparency, greater control, and new technologies will reshape the business and offers excellent opportunities to improve the way we do business and build the world's smartest port.

With our Supply Chain Suite and a Port Community Suite the Port of Rotterdam and its partners are developing the tools that make the entire supply chain and port operations much more robust, flexible and reliable, reduce waste and increase efficiency.

THE WORLD'S MOST SUSTAINABLE PORT

By 2030 Rotterdam aims to be Europe's cleanest and most sustainable port. By 2050 the port-industrial complex will be carbon neutral. We stimulate the use of clean energy and the modal shift towards more sustainable modes of transport.

We also take an active role in the development of LNG, hydrogen and other innovations that help to create a port and supply chain that will serve many generations to come in a responsible and sustainable manner.

CHOOSE TO STAY AHEAD

Choosing Rotterdam is choosing to stay ahead. Europe's #1 container port is the port of choice for goods and cargo flowing to and from the continent. And with good reason. The port is situated at the heart of European trade and serves both as the continent's preferred first and last port of call. Years of investing in building a worldwide network with over a 1000 ports, excellent infrastructure, and premium services have created the world's best connected, fastest and most efficient container port.

FOR MORE INFORMATION, PLEASE CONTACT

containers@portofrotterdam.com
www.portofrotterdam.com
+31 (0)10 252 1258

CONTAINER SHIPPING READY FOR THE FUTURE. MAKE IT HAPPEN.

CONTAINER SHIPPING
READY FOR THE FUTURE.
MAKE IT HAPPEN.

