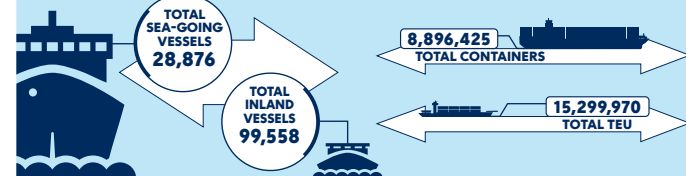
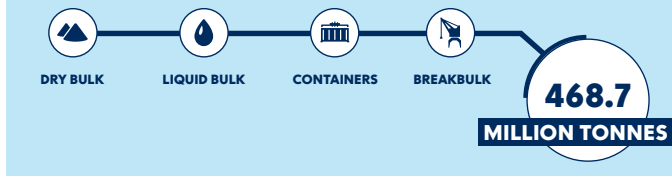


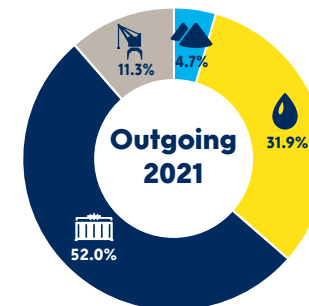
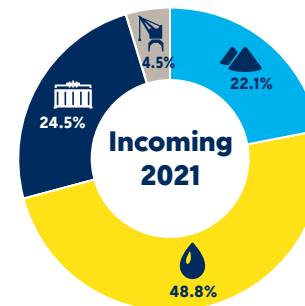
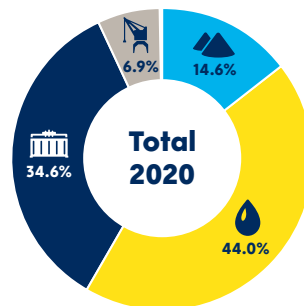
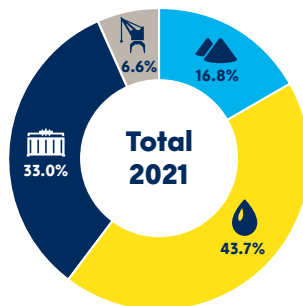


FACTS & FIGURES.
A WEALTH OF INFORMATION.
MAKE IT HAPPEN.

Photo: Eric Bakker



Cargo throughput Rotterdam



TOTAL THROUGHPUT BY COMMODITY

	2021	2020
Iron ore and scrap	30.3	22.7
Coal	24.6	17.3
Agribulk	8.6	10.3
Other dry bulk	15.3	13.5
Subtotal dry bulk	78.7	63.8
Crude oil	98.2	93.6
Mineral oil products	66.1	60.1
LNG	7.0	6.2
Other liquid bulk	33.3	32.1
Subtotal liquid bulk	204.6	192.0
Total bulk goods	283.3	255.8
Containers	154.5	151.1
Roll on/Roll off	24.0	24.0
Other general cargo	6.9	6.0
Total breakbulk	30.9	30.0
Total throughput	468.7	436.8

Unit: Gross weight x 1 million metric tons

Source: Port of Rotterdam

INCOMING AND OUTGOING BY COMMODITY 2021

	Incoming	Outgoing	Total
Iron ore and scrap	27.5	2.8	30.3
Coal	23.4	1.1	24.6
Agribulk	7.7	0.8	8.6
Other dry bulk	13.2	2.1	15.3
Subtotal dry bulk	71.9	6.8	78.7
Crude oil	96.8	1.4	98.2
Mineral oil products	35.9	30.2	66.1
LNG	6.4	0.6	7.0
Other liquid bulk	19.7	13.6	33.3
Subtotal liquid bulk	158.8	45.8	204.6
Total bulk goods	230.7	52.6	283.3
Containers	79.8	74.7	154.5
Roll on/Roll off	9.9	14.1	24.0
Other general cargo	4.8	2.1	6.9
Total breakbulk	14.7	16.3	30.9
Total throughput	325.2	143.5	468.7

Unit: Gross weight x 1 million metric tons

Source: Port of Rotterdam

Differences due to rounding off are possible. The Port of Rotterdam Authority does not accept any responsibility for any errors that might occur in this publication.

PUBLISHED BY: Havenbedrijf Rotterdam N.V. • Postbus 6622 • 3002 AP Rotterdam • The Netherlands • +31 (0)10 252 1010 • **Printing** ADC Nederland

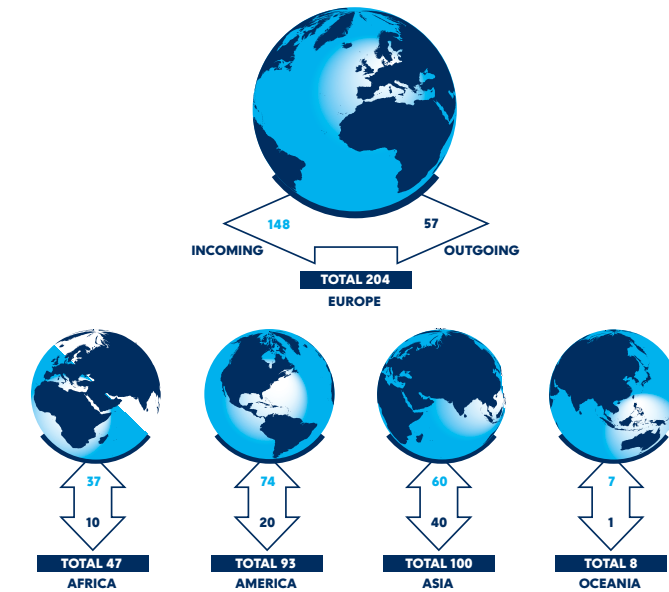
Port of Rotterdam

Unrestricted accessibility 24 hours a day, 7 days a week	2021
Total port area	12,464 ha
Land area	7,966 ha
Of which rentable sites, including Maasvlakte 2 - phase 2	6,260 ha
Water area	4,498 ha
Total length Rotterdam's port area	42 km
Water depth N.A.P. (max.)	24 m
Depth Eurogeul in the North Sea N.A.P. (max.)	26 m
Length Eurogeul in the North Sea	57 km
Pipelines	1,500 km
Quay length	79.5 km
Banks (slopes)	176 km
Sea and Inland jetties	131

565,000

The direct and indirect added value of the Port of Rotterdam is 63 billion euro. This represents 8.2% of the Dutch gross domestic product (GDP).

Incoming and outgoing goods, by continent



Unit: Gross weight x 1 million metric tons (estimates) Source: Port of Rotterdam

PORT OF ROTTERDAM AUTHORITY

The aim of the Port of Rotterdam Authority is to strengthen the competitive position of the port of Rotterdam as a logistics hub and a world-class industrial complex in terms of both size and quality.

The Port Authority is able and willing to make an impact and so it is focusing on accelerating sustainability in the port and it is a partner in the digitalisation of the port and logistics chains.

The Port Authority's core tasks are the sustainable development, management and operation of the port, the maintenance of the smooth and safe handling of shipping and supporting the future-resilience of the port of Rotterdam.

Facts and figures for the Port Authority and the Port of Rotterdam:

- Port of Rotterdam Authority: approximately 1,270 employees, revenue approximately € 770 million.
- Employment: (direct and indirect) 565,000 jobs in the Netherlands.

